

## Admission Fee

Permanent Exhibition	Free
----------------------	------

Planetarium & Full-dome Films		
	Adult	Child
Individual	¥ 500	¥ 200
Group	¥ 400	¥ 160

- Tickets can be purchased at a ticket machine from the museum open time (9:30 a.m.).
  - “Child” refers to elementary and junior high school students. Admission free for elementary and junior high school students (individual) who live or attend school in Sagami-hara City(\*1).
  - Admission free for preschoolers, visitors with disabilities and one attendant(\*1), and single-parent families(\*1).
  - Half-price for seniors(65 years or older)(\*1).
  - Groups : 20 or more paying visitors.
  - Group discounts cannot be combined with reduced or exempted admission fees.
- \*1 Certification required

Planetarium & Full-dome Films		
	Morning	Afternoon
Weekends & National Holidays & Special Screening Periods	Once	Three times
Weekdays (Excluding holidays)	*2 Once	*2 Once Twice

- Special screening periods are held during school spring, summer and winter vacations.
  - We ask you to vacate the hall between each screening. Please refrain from entering and exiting during the show.
  - Admission starts 10 minutes before the screening time.
  - Please contact us for movie program and running time.
  - No entry and no refunds for admission fees after the screening has begun.
- \*2 The screening is limited to groups only.  
Please inquire in advance.

## Further Information



Museum Website



Staff Blogs



X



Instagram



## Opening Hours & Closed Days

Opening Hours	9:30 a.m. — 5:00 p.m.
Closed Days	Mondays and the day following a national holiday (If Monday is a national holiday, the museum will be closed on the following weekday.) The year-end and New Year holidays (Dec.28-Jan.3)

## Access Information



Access the QR code on Google map to locate the museum.  
**Sagami-hara City Museum**  
 3-1-15, Takane, Chuo-ku, Sagami-hara, 〒252-0221  
 Tel : 042-750-8030 Fax : 042-750-8061  
 E-mail : hakubutsukan@city.sagami-hara.kanagawa.jp

■ Free parking available

■ To reach the museum by train and bus, nearest stops are:

From JR **Fuchinobe** Station (South exit)

20mins. on foot or

Kanachu Bus “Shiritsu Hakubutsukan Mae”  
(淵 # 36、# 37)

From JR **Sagami-hara** Station

Kanachu Bus “Uchu-Kagaku-Kenkyu Honbu”  
(相 # 02)

From Odakyu Line **Sagami-Ono** Station

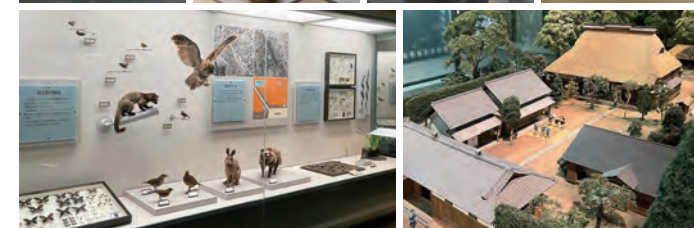
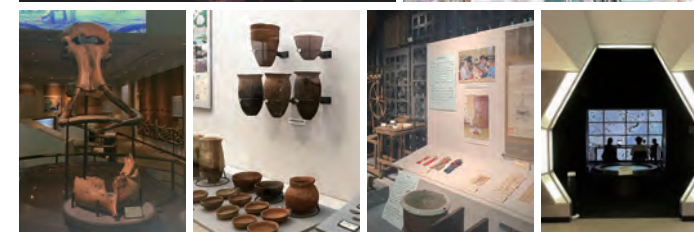
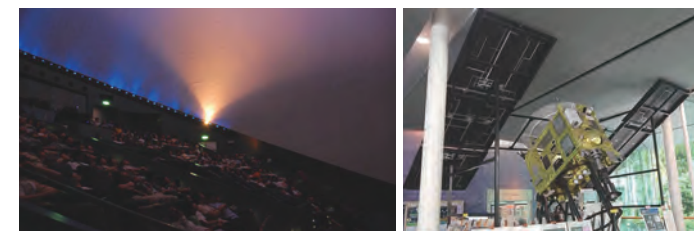
Kanachu Bus “Uchu-Kagaku-Kenkyu Honbu”  
(相 # 02)

From JR **Kamimizo** Station

Kanachu Bus “Yaei” (淵 # 52, #53, #59)



 **相模原市立博物館**  
SAGAMIHARA CITY MUSEUM



Designed & edited by Departments of Design Studies for Innovative Life / English Language, Culture and Communication, Sagami Women's University



English

2023.12 revised



## Learn about rivers, uplands, and human life.

### Exhibitions on Nature and History

#### 1 Geology and Topography The formation of Sagamihara upland

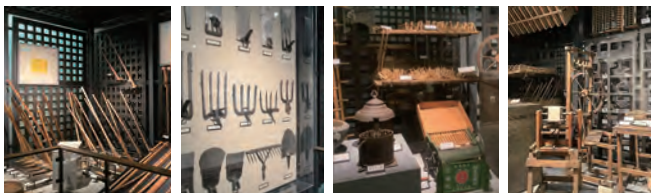


#### 2 Local History Earthenware and other artifacts



Deep bowl with a clay figure (ca. 3,000 B.C.)

#### 3 Traditional Life and Culture Agriculture and our ancestor's lives



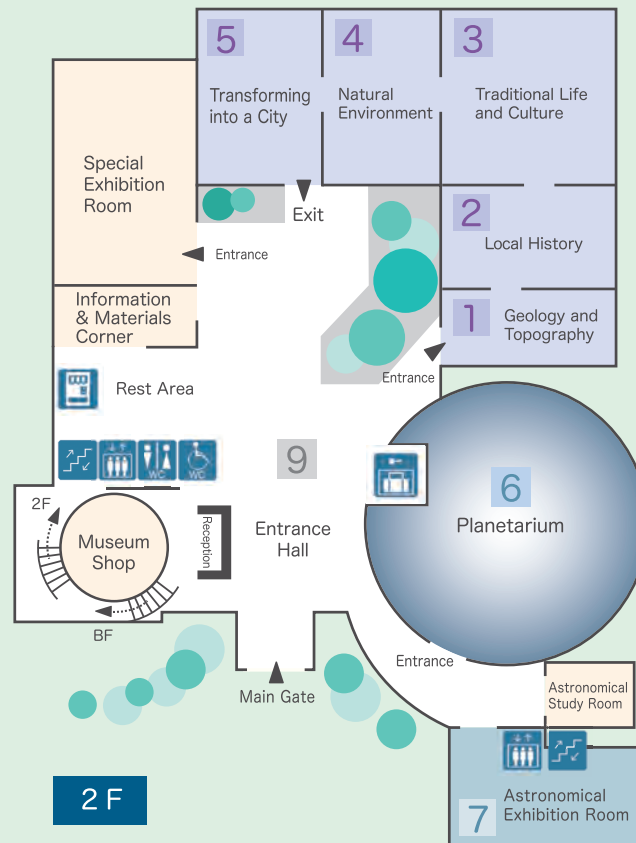
#### 4 Natural Environment The diverse nature adjacent to the urban area of Sagamihara city



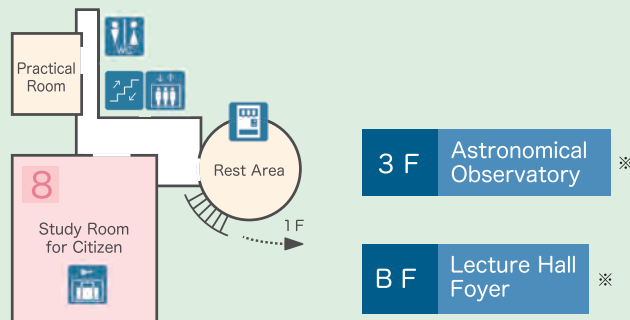
#### 5 Transforming into a City Sagamihara's urbanization and industrial development



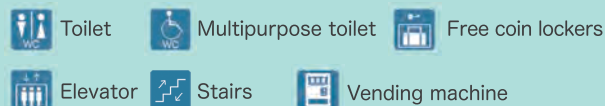
1 F



2 F



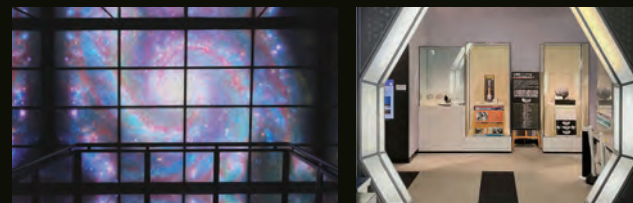
※Open only during events



#### 6 Planetarium Enjoy the starry sky in the 23-meter-diameter dome!



#### 7 Astronomical Exhibition Room Videos about space, meteorites, and real-time view of the sun



#### 8 Study Room for Citizen (2F) Access to specialized books /consultation with curators

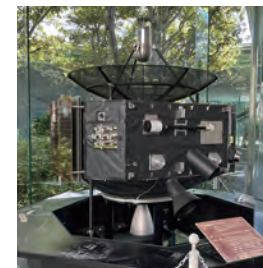


Rest Area

#### 9 Entrance Exhibition (1F)



Asteroid Explorer "Hayabusa 2"  
1/10 model



Mars Explorer "NOZOMI"  
Full-scale model